

◆ **IS HDTV THE SAME THING AS DTV?**

No. HDTV is the highest quality of DTV, but it is only one of several formats. In addition to HDTV, the most common format is Standard Definition Television (SDTV). Consumers who have high definition TV sets may receive free high definition television programming over the air using an antenna.

**INFORMATION WEBSITES  
TO HELP  
WITH YOUR TRANSITION**

**Websites Pertaining  
to DTV Transition:**

[www.dtvanswers.com](http://www.dtvanswers.com)

[www.dtvtransition.org](http://www.dtvtransition.org)

[www.dtv.gov](http://www.dtv.gov)

**Websites Pertaining  
to Antenna Usage:**

[www.antennaweb.org](http://www.antennaweb.org)

[www.dtvto go.com](http://www.dtvto go.com)

**Websites Pertaining  
to Coupon Program:**

[www.ntia.doc.gov](http://www.ntia.doc.gov)

**Phone:**

1-888-DTV-2009



COMPLIMENTS OF  
**SENATOR  
WAYNE D. FONTANA**



**DISTRICT OFFICES**

930 Brookline Boulevard  
Pittsburgh, PA 15226-2106  
(412) 344-2551 • Fax: (412) 344-3400

Kenmawr Plaza

524 Pine Hollow Road  
Kennedy Township, PA 15136-1661  
(412) 331-1208 • Fax: (412) 331-2079

**SATELLITE OFFICE**

1660 Broadway Avenue  
Pittsburgh PA 15216-3247  
(412) 343-2080 • Fax: (412) 343-2418

*Office Hours: Tues.: 10 a.m.-2 p.m.  
Weds.: 3 p.m.-7 p.m. • Thurs.: 10 a.m.-2 p.m.*

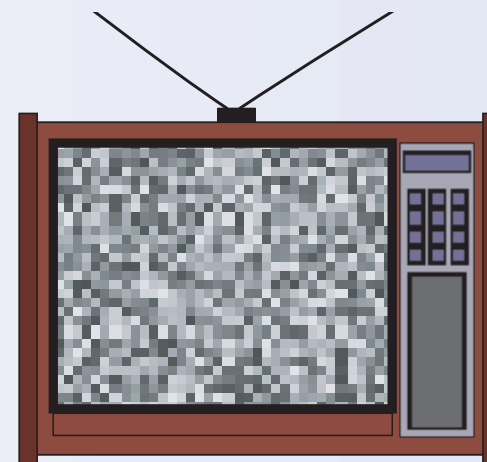
**HARRISBURG OFFICE**

Senate Box 203042  
Harrisburg, PA 17120-3042  
(717) 787-5300 • Fax: (717) 772-5484  
Senate of Pennsylvania: 1-800-364-1581 (TTY)

**E-MAIL:** [fontana@pasenate.com](mailto:fontana@pasenate.com)

**WEB SITE:** [www.senatorfontana.com](http://www.senatorfontana.com)

# DIGITAL TELEVISION TRANSITION IS COMING



**You May Need To Adjust Your Set**

## WILL YOU BE READY?

COMPLIMENTS OF  
**SENATOR WAYNE D. FONTANA**

# DIGITAL TELEVISION TRANSITION...ARE YOU READY?

## ◆ WHAT IS DIGITAL TELEVISION TRANSITION?

Beginning February 17, 2009, all television stations will cease broadcasting in analog and will broadcast in digital only.

Digital broadcasting promises to provide a clearer picture and more programming options. Another important benefit of the switch to all-digital broadcasting is that it will free up parts of the valuable broadcast spectrum for public safety communications (police, fire departments, and rescue squads). The *digital television transition* is also called *analog-to-digital conversion*.

## ◆ WILL MY TELEVISION WORK AFTER FEBRUARY 17, 2009?

Analog television will not receive an over-the-air signal after February 17, 2009. Television viewers with these sets will need to take action before that date to ensure their TV sets continue to work.

## ◆ WHAT IS ANALOG TELEVISION?

You are probably viewing analog TV if your set is older, is labeled *analog* or *NTSC* and is not labeled as containing a digital tuner.

## ◆ WHAT ARE MY OPTIONS SO I CAN CONTINUE TO GET TV AFTER FEBRUARY 17, 2009?

As a consumer, you have a few options. You may:

- Keep your existing analog TV and purchase a TV converter box. A converter box plugs into your TV and will keep it working after February 17, 2009.
- Connect to cable, satellite or other pay service.
- Purchase a television with a digital tuner.

## ◆ WHAT IS A TV CONVERTER BOX?

A TV converter box is a new product that plugs into your analog TV and, along with your antenna, will keep your analog set working after February 17, 2009. A TV converter box is a one-time purchase and should cost between \$50 and \$70.

## ◆ WHAT IS THE TV CONVERTER BOX COUPON PROGRAM?

Congress created the TV Converter Box Coupon Program for households that want to keep using their analog TV sets after February 17, 2009. The Program allows U.S. households to obtain up to two coupons, each worth \$40 that can be applied toward the cost of converter boxes.

## ◆ HOW DO I KNOW IF I HAVE AN ANALOG OR A DIGITAL TV?

What you need to know is whether your TV set has something called a *digital tuner* already built in. If it does, your TV set will work after February 17, 2009.

The best way to determine whether your TV set has a digital tuner built in is to consult your

owner's manual. If that's not possible, you may be able to look up information about your TV set on the manufacturer's website. Or, you can take an up-close look at your TV set. In any case, you're trying to find out if your set has an input connection labeled *digital input* or *ATSC* (for Advanced Television Systems Committee, which is the DTV format).

## ◆ GENERAL GUIDELINES THAT MAY HELP:

- If you bought your TV set before 1998, it probably doesn't have a digital tuner. Almost every TV set made before 1998 was a traditional *analog* set.
- If you bought a big-screen, projection TV between 1998 and 2004, it may have a built-in digital tuner inside. But chances aren't great. Only a limited percentage of projection TV sets (and generally only those 42 inches in diameter or larger) included digital tuners before 2004.
- If you purchased a new TV set since 2004, your chances of having a built-in digital tuner improve dramatically. Starting in 2004, many of the TV sets sold at popular electronics stores feature digital tuners that will work after February 17, 2009. But it's not a sure thing. Even some of the newer TV sets are purely display monitors that lack the internal circuitry needed to pick up digital broadcasts. Usually these sets have been advertised as *HD-ready* or *HDTV monitor* sets. That means they can display digital and high-definition signals, but they need help getting those signals in the first place. You'll still need a special converter or a cable TV connection.

---

## HOW TO GET YOUR COUPONS

Consumers can apply for up to two \$40 coupons per household.

1-888-DTV-2009 (1-888-388-2009)

[www.dtv2009.gov](http://www.dtv2009.gov)

Mail the application to:  
PO Box 2000, Portland, OR 97208-2000

*Coupons will be mailed to requesters on a first-come-first-served basis.*