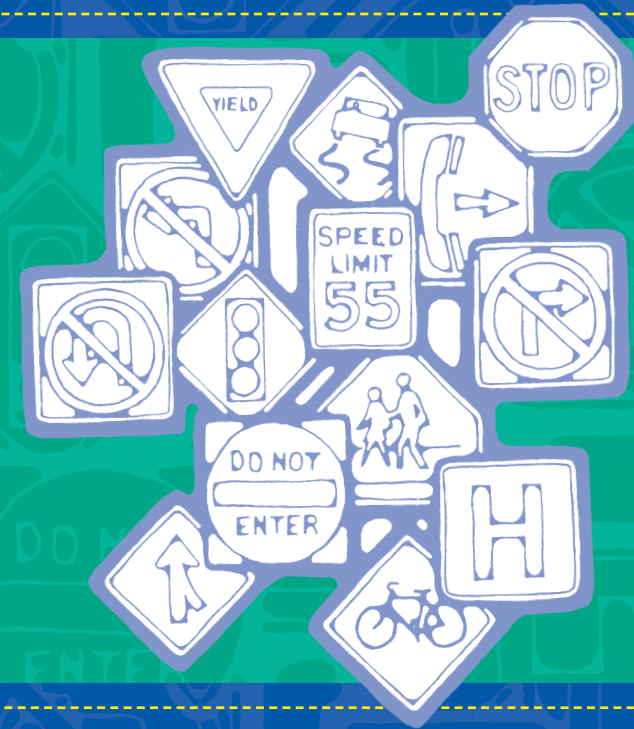


THE FOLLOWING SCHEDULE INDICATES THE VIOLATIONS AND THE NUMBER OF POINTS GIVEN FOR COMMITTING EACH VIOLATION:

Vehicle Code	Description	# of Points
1512	Violation of restriction on driver's license—wearing glasses, etc.	2
1571	Violation concerning license	3
3102	Failure to obey policeman or authorized person	2
3112(a)(3)(i) or (ii)	Failure to stop for a red light	3
3114(a)(1)	Failure to stop for a flashing red light	3
3302	Failure to yield half of roadway to oncoming vehicle	3
3303	Improper passing—overtaking driver to maintain speed; passing driver to pull in at safe distance	3
3304	Improper passing on the right	3
3305	Improper passing on the left—clear distance ahead	3
3306(a)(1)	Improper passing on a hill	4
3306(a)(2)	Improper passing at a railroad crossing or intersection	3
3306(a)(3)	Improper passing at a bridge or tunnel	3
3307	Improper passing in a no-passing zone	3
3310	Following too closely	3
3321	Failure to yield to driver on the right at intersection	3
3322	Failure to yield to oncoming driver when making left turn	3
3323(b)	Failure to stop for stop sign	3
3323(c)	Failure to yield at yield sign	3
3324	Failure to yield when entering or crossing roadway between intersections	3
3332	Improper turning around—illegal U-turns	3
3341(a)	Failure to obey signal indicating approach of train	2
3341(b)	Failure to comply with crossing gate or barrier	30 day suspension and 4
3342(b) or (e)	Failure to stop at railroad crossings	4
3344	Failure to stop when entering from alley, driveway or building	3
3345(a)	Failure to stop for school bus with flashing red lights	60 day suspension and 5
** 3361	Driving too fast for conditions	2
3362	Exceeding maximum speed	
	Miles over speed limit:	
	6 to 10	2
	11 to 15	3
	16 to 25	4
	26 to 30	5
	31 and over	5*
3365(b)	Exceeding special speed limit in school zone and 60 day suspension for a second or subsequent offense	3
3365(c)	Exceeding special speed limit for trucks on downgrades	3
3542(a)	Failure to yield to pedestrian in crosswalk	2
3547	Failure to yield to pedestrian on sidewalk when entering from a driveway or alley	3
3549(a)	Failure to yield to blind pedestrians	3
3702	Improper backing	3
** 3714(a)	Careless driving	3
3745	Leaving scene of accident involving property damage only	4

*5 points and a departmental hearing and sanctions provided under Section 1538 (d). **If a driver is convicted of these offenses in addition to another committed at the same time and place, no points shall be assigned for these sections if points are assigned for the other offense.

THE PENNSYLVANIA POINT SYSTEM
for licensed drivers



Compliments of
SENATOR WAYNE D. FONTANA

BROOKLINE DISTRICT OFFICE

930 Brookline Blvd. • Pittsburgh, PA 15226-2106
(412) 344-2551 • Fax: (412) 344-3400

KENNEDY DISTRICT OFFICE

Kenmawr Plaza
524 Pine Hollow Rd. • Kennedy Township, PA 15136-1661
(412) 331-1208 • Fax: (412) 331-2079

HARRISBURG OFFICE

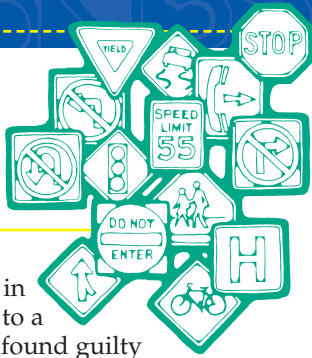
Senate Box 203042 • Harrisburg, PA 17120-3042
(717) 787-5300 • Fax: (717) 772-5484

Senate of Pennsylvania: 1-800-364-1581 (TTY)

E-MAIL: fontana@pasenate.com

WEB SITE: www.senatorfontana.com

THE PENNSYLVANIA POINT SYSTEM AND HOW IT WORKS



PennDOT maintains a driving record for every licensed driver in Pennsylvania. Points are added to a driving record when a driver is found guilty of certain driving (moving) violations.

The purpose of the point system is to help to improve driving habits and to ensure safe driving. PennDOT begins to take corrective actions when a driving record reaches 6 or more points. The following sections explain what happens when a driving record reaches 6 or more points:

◆ UNDER THE AGE OF 18

The driving privilege of a person under the age of 18 will be suspended if that person accumulates six (6) or more points or is convicted of driving 26 miles per hour or more over the posted speed limit. The first suspension will be for a period of 90 days. Any additional occurrences will result in a suspension of 120 days. This suspension is in addition to the requirements of the point system found below.

◆ FIRST ACCUMULATION OF 6 POINTS

When any driving record reaches 6 or more points for the first time, the driver will receive a written notice to take a special written point examination. The examination will address: *knowledge of safe driving practices, knowledge of departmental sanctions, and knowledge of related safety issues.*

The driver has 30 days to successfully pass the exam or else the license will be suspended until the exam is passed. If the exam is passed within the 30 day period, 2 points will be removed from the driving record.

◆ SECOND ACCUMULATION OF 6 POINTS

When any driving record is reduced below 6 points and then for a second time reaches 6 or more points, the driver will have to attend a departmental hearing. The driver will receive a written notice of the specific time and location of the required hearing. At the hearing, a hearing examiner will review the driver's record. After the hearing, the Department may recommend one or more: *order a*

15 day license suspension, order the driver to take a special on-road driver's examination or take no action.

If a person's driving privilege is suspended or a special driver's exam is recommended, 2 points will be removed from the driving record if the driver passes the exam within 30 days or 2 points will be removed once the 15 day suspension has been served. No points are removed from the driving record if the Department does not initiate a sanction.

Failure to attend this departmental hearing will result in a 60 day license suspension.

◆ THIRD OR MORE ACCUMULATION OF 6 POINTS

When any driving record is reduced below 6 points and for the third or subsequent time reaches 6 or more points, the driver will have to attend a departmental hearing. The hearing examiner will review the driving record. The Department will then determine if a 30 day license suspension will be initiated.

Failure to attend this departmental hearing will result in the suspension of the driver's license until the driver attends the hearing.

◆ EXCESSIVE SPEEDING

When a driver is convicted for speeding 31 miles per hour or more over the posted speed limit, the driver will have to attend a departmental hearing. The driver will receive a written notice of the specific time and location of the required hearing. The hearing examiner will review the driving record. Upon the Department's review of the hearing file, one or both of the following will be initiated: *15 day license suspension, special on-road driver's examination.*

If a 15 day suspension is initiated, the driving record will show 5 points upon restoration. No points are removed if a special driver's examination is initiated and completed.

Failure to attend this departmental hearing will result in a 60 day license suspension.

◆ ACCUMULATION OF 11 POINTS OR MORE

When any driving record reaches 11 or more points, the driver's license will automatically be suspended. The length of suspension depends on how many times the license was suspended in the past. The suspension schedule is as follows:

- First suspension—5 days per point
- Second suspension—10 days per point
- Third suspension—15 days per point
- Subsequent suspension—One year

FURTHER: Any suspension for an accumulation of 11 points or more is in addition to any other suspensions mandated under accumulation of points.

◆ POINT REMOVAL FOR SAFE DRIVING

Three points are removed from a driving record for every 12 consecutive months a person drives (from the date of last violation) without a violation which results in points, license suspension or revocation. Once a driving record is reduced to zero and remains at zero points for 12 consecutive months, any further accumulation of points is treated as the first accumulation of points.

◆ LICENSE SUSPENSION AND RESTORATION

If a person's driving privilege is to be suspended, a written notice will be mailed to the driver listing the date when the suspension will begin. The driver may appeal the suspension to his or her county's Court of Common Pleas. The appeal must be made WITHIN 30 DAYS AFTER the mailing date of the notice. The driver's license must be returned to the Bureau of Driver Licensing by the effective date of suspension listed on the notice or the State Police and local police will be notified to pick up the license. In addition to serving the suspension or revocation, the appropriate restoration fee must be paid before the license will be returned, the driving record will show 5 points, regardless of the number of points which appeared on the record before the license was suspended (except in the case of a 15 day suspension resulting from a hearing for the second accumulation of 6 points).

◆ NOTICE OF CHANGE OF NAME OR ADDRESS

Within 15 days of change of name or address, you are required by law to notify the Bureau of Driver Licensing in writing or visit their web site at: www.dmv.state.pa.us

◆ FOR ADDITIONAL INFORMATION

If you have questions about your driving record or the Pennsylvania Point System in general, call:

1-800-932-4600